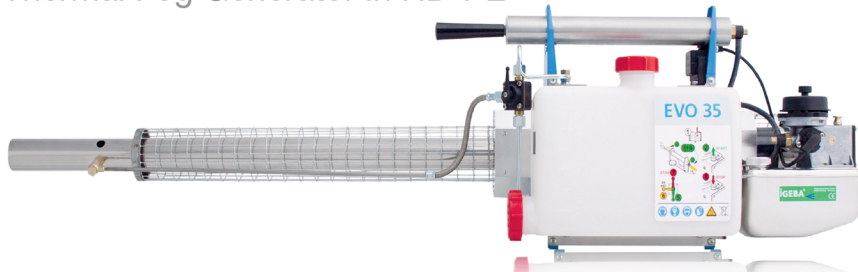


IGEBA EVO-35

Thermal Fog Generator in HD-PE



"The equipment has been found by the International Pesticide Application Research Centre (IPARC) (Imperial College, Ascot, UK) to comply with the requirements of the WHO Equipment for Vector Control specification guidelines WHO/HTM/NTD/WHOPES/2010.9 REVISED EDITION 2010" (EVO35/E)

EVO 35 is a universal Thermal Fog Generator designed for different fields of application, indoors or outdoors. This unit can be used with all common pesticides and disinfectants.

A convincing cost-effective Thermal Fog Generator for multipurpose applications.

- pest and Vector control, disinfection, public health
- Plant protection, stored products control, bird control

The performance of the combustion chamber¹ of 25,4 HP enables output quantities up to 42 l/h (oil). Even water based solutions can be applied at its best.

- New carburetor layout, for easy maintenance, made from aluminium
- Solution tank from HD-PE
- For water- and oil-based formulations

Technical specifications

Weight in kg, empty but ready for use	7.8 kg
Dimensions L x W x H in cm	133.5 x 28.5 x 34
Solution tank capacity in l (HD-PE)	6.5
Fuel tank capacity in l (stainless steel)	1.2
Fuel consumption, approx. in l/h	2.0
Performance of combustion chamber in KW/HP ¹	18.7/25.4
Average flow rate, in l/h (oil)	20
Maximum flow rate, in l/h (oil)	42
Average flow rate, with water in l/h	10
Effective horizontal reach, in closed rooms in m (water-based solutions with carrier, i.e. Nebol)	40
oil-based solutions)	> 100
Power supply Flashlight batteries	4 x 1.5 V
Pressure in solution tank, approx. in bar	0.3

Different executions for special applications available.

Special executions

- EVO W 35 for water-based solutions
- EVO W 35 L with acid resistant solution system
- EVO 35 E with emergency cut-off device

¹Theoretical value based on the energy of consumed fuel

For more information please contact us.



IGEBA Geraetebau GmbH
P.O.BOX 6 D-87487 Weitnau/Germany
T +49 (0) 8375 9200-0
F +49 (0) 8375 9200-22
www.igeba.de

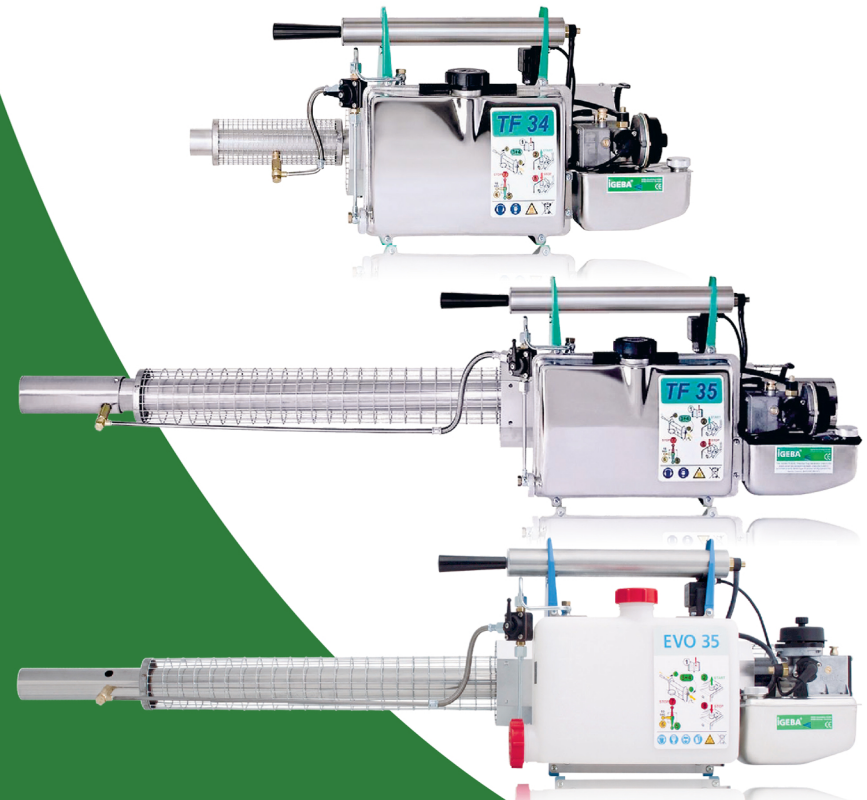


Unit 403-404 Tritan Plaza
Paseo de Magallanes, Makati City
Phone: 808-1585; 897-1864
E-mail: es_customerservice@pycor.com
www.pycor.com
Mobile: 0945-486-4451 / 0932-361-7157



Thermal Fog Generators

Made in Germany

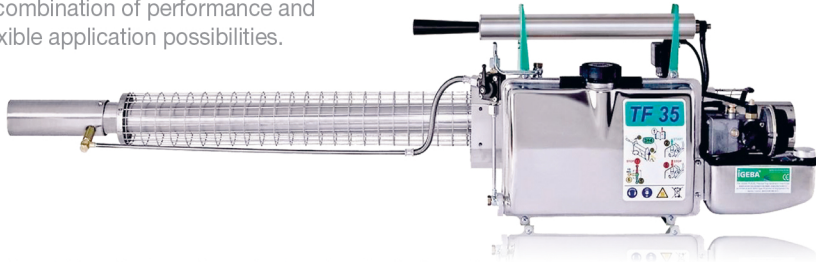


Perfection down to the last detail

IGEBA TF-35

The Portable Classic

A combination of performance and flexible application possibilities.



This insecticide application equipment has been found by the Vector Research Control Unit (University of Science Malaysia, USM) to comply with the requirements of the WHO Equipment for Vector Control specification guidelines WHO/VBC/89.973 (TF35/E)

An excellent combination of expertise, performance and highest quality standards

The IGEBA TF35 is the master of its class and the first choice for professional application. Only high-quality materials, such as stainless steel are used and combined with the best compounds available. This leads to a long life of the equipment and ensures compatibility for the daily demands. Manufactured after international standards and requirements this unit is appreciated around the world.

- Patented and reliable ignition system without spark plug for increased user-friendliness
- Solution and fuel tank as well as the fog tube and solution lines made of stainless steel
- Reliable ignition system without spark plug
- Covered air intake valve, providing a silencer effect and protection against dust and solution particles.

Technical specifications

Weight in kg, empty but ready for use	7.9 kg
Dimensions L x W x H in cm	137.5 x 27 x 34
Solution tank capacity in l	5.7
Fuel tank capacity in l	1.2
Fuel consumption, approx. in l/h	2.0
Performance of combustion chamber in KW/HP	18.3/24.8
Maximum flow rate, approx. in l/h	42
Effective horizontal reach, indoors, approx. in m (water-based with carrier, i.e. NEBOL)	40
(oil-based)	> 100
Power supply	Flashlight batteries 4 x 1.5 V

Considering the maximum flow rate, an operator can treat at a flow rate of 1 litre/2.500 m³ up to 105.000 m³/h or 3.708.000 ft³/h.



Bent Fog Tube accessory is available for sewage treatment using TF-35.

IGEBA TF-34

The Ideal Solution for Small Indoor Spaces



The equipment has been found by the International Pesticide Application Research Centre (IPARC) (Imperial College, Ascot, UK) to comply with the requirements of the WHO Equipment for Vector Control specification guidelines WHO/HTM/NTD/WHOPES/2010.9 REVISED EDITION 2010 (TF34/E)

Only 78cm total length and an empty weight of 6.6 kg, TF 34 is the smallest and lightest Thermal Fog Generator of the IGEBA product range. It was designed with the main objective of indoor fogging and is characterized by its compact size, light weight and excellent emission values. Of course it can also be used outdoors.

Technical specifications

Weight in kg, empty but ready for use	6.6 kg
Dimensions L x W x H in cm	78 x 27 x 34
Solution tank capacity in l	5.7
Fuel tank capacity in l	1.2
Fuel consumption, approx. in l/h	1.1
Performance of combustion chamber in KW/HP	10/13.6
Maximum flow rate, approx. in l/h	25
Effective horizontal reach, indoors, (oil-based formulations) approx. in m	> 100
Power supply	Flashlight batteries 4 x 1.5 V

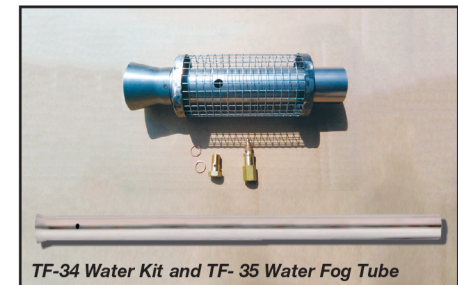
Exhaust gas value	Average	Maximum	Limiting value
Nitric oxide NO	1.9 ppm*	2.8 ppm*	5 ppm*
Carbon monoxide CO	5.1 ppm*	8.0 ppm*	30 ppm*

*in a closed room (70 m³) after 12 min.

Excellent exhaust emission confirmed by the independent German test laboratory "DEKRA", January 2003

These results ensure the harmlessness of the exhaust gases of the TF 34. This is an important requirement for the unobjectionable use in limited spaces, i.e. rooms, flats and houses.

Also Available



Special W fog tube is available for the application of water-based formulations.

